

TAPER GAGES
SERIES 269:



For determining hole size in dies and all kinds of other work. Reads in thousandths of an inch or 0.02mm. All sizes are made from spring tempered steel approximately .012" thick and have a locking device which makes it possible to lock any leaf in position for use. Furnished in a protective case.

Leaves	Catalog Range	Length	No.	EDP No.	Price
8	1/10 - 1/2"	2-1/2"	269A	51290	
10	1/2 - 1"	2-3/4"	269B	51291	
10	2 - 12mm	64mm	269MA	56031	
13	12-25mm	70mm	269MB	56032	

DRILL GAGES
SERIES 244:

- Made of heavy gage carbon steel.
- Hole sizes and decimal equivalents permanently etched.



Order No.	For Drill sizes	Price
1660214	A - Z	
1660211	1 - 60	
1660213	1/16 - 1/2 by 64ths	
1660215	Set of above 3	
1660212	1 mm - 13mm	

DRILL AND WIRE GAGES
SERIES 244:



WIRE GAGE



STANDARD - Satin Chrome Finish, Hardened.

Description	Range	Order No.	Price
Drill Gage	#1 - #60 - 60 Holes	1660001	
Drill Gage	#61 - #80 - 20 Holes	1660002	
Drill Gage	1/16 - 1/2 x 1/64 - 29 Holes	1660003	
Drill Gage	A - Z - 26 Holes	1660004	
Drill Gage	1mm - 5.9mm - 57 Holes	1660011	
Drill Gage	1.5mm - 12.5mm - 30 Holes	1660012	
Wire Gage	0-36 American Standard	1660100	
Wire Gage	0-36 U.S. Standard	1660200	

DRILL AND STEEL WIRE GAGE - HARDENED

SERIES 186, 187, 198, 286:



- Used to quickly and conveniently identify drill bit sizes.
- Made of heavy gage steel, machined and ground to close tolerances.
- Hole sizes and decimal equivalents are permanently etched on the face.
- Attractive satin finish.
- Gage is thoroughly tested for accuracy after hardening.

Range Drill Sizes	Catalog No.	EDP No.	Price
No. 1 - 60	186	50676	
No. 61 - 80	286	51320	
1/16 - 1/2"	187	50677	
A-Z	198	50718	

WIRE GAGES- RECTANGLE AND ROUND
SERIES 244:



- Popular gage for iron wire, hot and cold rolled sheet steel.
- Made from bright finished and polished hardened stainless steel.
- Gages have a convenient decimal equivalent of each number.
- Clear permanently etched graduations in USA Standard.



Order No.	Description	Price
1660400	Rectangular	
1660300	Round	

SURFACE ROUGHNESS GAGE (MICRO FINISH COMPARATOR)
SERIES 247:



Contains 22 specimens of differently machined surfaces (Lapped, Ground, Blanchard, Turned, Milled and Profiled) from 2 to 500 micro inches.

Order No. 1685022	Price	
-------------------	-------	--

Quality Precision Tools

The Choice Is Yours!!!

PRECISION TOOLS



MICROFINISH SURFACE COMPARATORS

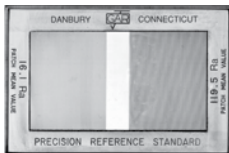


SERIES 713:

ALL COMPARATORS ARE MADE OF ELECTROFORMED NICKEL

Individually serialized, calibrated and certified reference standards are available at an additional charge.

PRECISION REFERENCE STANDARD: an economical calibration standard for surface analyzing equipment. Ra values 119.5 and 16.1; includes certification traceable to N.I.S.T. Individually serialized, calibrated and certified. Reference Standards are also available.



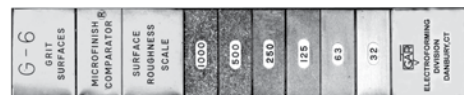
Model No.	Order No.	Price
PRS-603	2470001	

CYLINDRICAL GROUND MICROFINISH COMPARATOR: 10 replicated ground surface finish specimens: 5 shown as inside diameter (I.D.) and 5 shown as outside diameter (O.D.) - both with a range of 4 to 63 microinches.



Model No.	Order No.	Price
G-62	2470062	

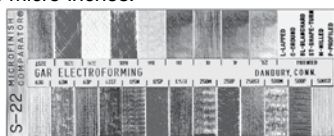
GRIT-BLAST MICROFINISH COMPARATOR: 6 replicated grit-blasted surface finish specimens ranging from 32 to 1000 microinches.



Model No.	Order No.	Price
G-6	2470006	

CONVENTIONAL MACHINING MICROFINISH COMPARATOR:

22 replicated machined surface finish specimens with examples of six different machining processes: lapped, ground, blanchard ground, shape-turned, milled and profiled - ranging from 2 to 500 micro-inches.



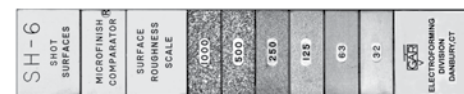
Model No.	Order No.	Price
S-22	2470022	

CYLINDRICAL TURNED MICROFINISH COMPARATOR: 10 replicated turned surface finish specimens: 5 shown as inside diameter (I.D.) and 5 shown as outside diameter (O.D.) - both with a range of 16 to 250 microinches.



Model No.	Order No.	Price
G-63	2470063	

SHOT-BLAST MICROFINISH COMPARATOR: 6 replicated shot-blasted surface finish specimens ranging from 32 to 1000 microinches.



Model No.	Order No.	Price
SH-6	2470106	

CONVENTIONAL MACHINING MICROFINISH COMPARATOR:

12 replicated machined surface finish specimens with examples of five different machining processes: lapped, ground, profiled, shape-turned and milled - ranging from 4 to 125 microinches.



Model No.	Order No.	Price
G-60	2470060	

For MEDA - Superior Import see previous page.

CAST MICROFINISH COMPARATOR: 9 replicated cast surface finish specimens ranging from 20 to 900 microinches.



Model No.	Order No.	Price
C-9	2470009	

CONVENTIONAL MACHINING MICROFINISH COMPARATOR: 12 replicated machined surface finish specimens with examples of four different machining processes: shape-turned, ground, profiled and milled-ranging from 250 to 2000 microinches.



Model No.	Order No.	Price
G-61	2470061	

ELECTRICAL DISCHARGE MACHINED MICROFINISH COMPARATOR (EDM): 9 replicated EDM surface finish specimens ranging from 16 to 250 microinches.



Model No.	Order No.	Price
E-9	2470109	

MASTER VISUAL-TACTUAL SET: 8 individual blocks with fifteen replicated machined surface finish specimens ranging from 2 to 125 microinches.



Model No.	Order No.	Price
M-15 Set	2470015	

GAR PAK KIT: Contains 4 individual roughness scales that include replicated surface finish specimens of machined (S-22), grit-blasted (G-6), shot-blasted (SH-6) and electrical discharge machined (EDM) (E-9) surfaces.



Model No.	Order No.	Price
G-4 Kit	2470004	

CENTER GAGES
SERIES 248:



- Very handy gage used in grinding and setting screw cutting tools.
- Made of tempered stainless steel.
- Clearly etched scale for finding number of threads per inch.
- Inch gage is graduated in 14ths, 20ths, 24ths, 32nds and features a table of double depth of thread for determining size of tap drills.
- Metric Gage graduated in mm and 1/2mm.
- Supplied in a plastic pouch.



Order No.	Description	Price
1690060	American Unified National Standard 60°	
1690560	Metric 60°	

TWIST DRILL GRINDING GAGE
SERIES 235:



- For twist drills with acute angle of 118° up to 2" (50mm) diameter.
- Made from Stainless Steel.

Order No.	Overall length	Price
1615002	4-1/2"/114mm	



UNIVERSAL GRINDING GAGE
SERIES 235:



- Made of Polished Stainless Steel.
- Clearly etched graduations.
- Combines twist drill grinding gages, thread gage.
- Measures square and hexagonal angles of 120°, 118°, 90°, 60°, 55°

Order No.	Overall length	Price
1615003	3-3/4"/95mm	



ROUND BAR CENTER FINDER
SERIES 250:



- Accurately and quickly locates center on round workpiece.
- For execution place the tool in drill chuck or collet and line up pointer with line scribed on shaft.
- Supplied with instructions



Order No.	Shank Dia.	Overall Length	Price
1700025	3/8"/9.5mm	4-1/8"/105mm	

60° CENTER GAGES
SERIES 248:



Used in grinding and setting screw cutting tools. Graduated in 14ths and 20ths on one side and 32nds and 32nds on the other side for determining threads per inch. Features table of double depths of threads for determining size of tap drills. The metric model is graduated in millimeters on one side.

Inch	Order No. 1690061	Price
Metric	Order No. 1690561	Price

CENTER GAGES
STARRETT SERIES C391, C396, C398M:



C391 and C396 are graduated in 14ths, 20ths, 24ths, and 32nds for finding number of threads per inch. No. C391 has table of double depths of threads for determining size of tap drills. Graduations on No. 398M are in mm and 1/2mm. All gaging surfaces ground. Satin Chrome finish.



Catalog No.	EDP No.	Description	Price
C391	51475	American National or U.S. Standard, 60°	
C396	51477	Whitworth or English Standard 55°	
C398M	51478	Metric Standard, 60°	

DRILL POINT GAGE
SERIES 235:



- For properly grinding 59° drill points for measuring drill tips.
- Rule and slide are made of steel with non-glare hard chrome finish.
- 6" rigid rule is calibrated in 8ths, 64ths, 32nds, and 64ths.
- Slide is calibrated in 32nds and 64ths.
- End clip is adjustable and removable.
- Versatile - can be used as rule, hook rule, try square, depth gage or caliper and for layouts.

Order No. 1615000	Price

DRILL POINT GAGE
STARRETT SERIES 22:



Provides a quick accurate way for determining the correct drill point angle of 59° and the correct length of drill lips.

- Length 6"
- Head is beveled to 59°, graduated in 32nds
- Blade graduations - 8ths, 16ths, Quick Reading 32nds, 64ths
- Sliding head can be adjusted and locked by a thumb nut.
- Hook can be adjusted or extended on either side of rule or removed.
- Can also be used as plain rule, hook rule, depth gage, and slide caliper.

Catalog No.	EDP No.	Price
22C	50150	