

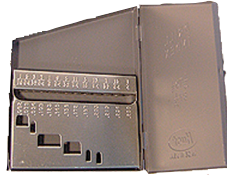


**INDEXES & STANDS**  
SERIES 569:



**DRILL INDEXES**

JOBBERS LENGTH  
SILVER & DEMING-1/2" Shank



Model No.	Description	Order No.	Price
313	1/16" to 1/4" x 64ths (single panel) Jobbers Length	5612750	
15	1/16" to 1/2" x 32nds Jobbers length	5610350	
20	No. 61 to 80 inc. Jobbers length	5610400	
21	1/16" to 3/8" x 64ths Jobbers length	5610450	
26	A to Z inc. Jobbers length	5610500	
29	1/16" to 1/2" x 64 ths Jobbers length	5610550	
60	No. 1 to 60 inc. Jobbers length	5610600	
80	No. 1 to 80 inc. Jobbers length	5610700	
10001	Hang-up 1/16" to 1/4" x 64ths Jobbers length	5610001	
88SD	9/16" to 1" by 16ths Silver Deming	5610760	
	15 Silver Deming 1/2" to 23/32" by 64ths	5610761	
	10 Silver Deming 47/64" to 7/8" by 64ths	5610762	
	8 Silver Deming 33/64" to 23/32" by 64ths	5610763	
1316	1/64" to 1/4" x 64ths Jobbers lengths	5610800	
119	Maintenance Index holds: 1/16", 5/64", 3/32", 1/8" #29,#, #25, 5/32", #21,3/16", 7#, 7/32", 1/4" #F, 5/16, #U, 3/8", 27/64", 7/16", 1/2"	5610875	
2100	1/16" to 1/4" x 64ths and 9/32" to 1/2" x 32nds Jobber length	5612300	

**METRIC**

Order No.	Description	Model No.	Price
4011	1 to 6mm by 0.5mm	5611000	
4013	1 to 7mm by 0.5mm	5611050	
4019	1 to 10mm by 0.5mm	5611100	
4025	1 to 13mm by 0.5mm	5611150	
4041	6 to 10mm by 0.1mm	5611200	
4050	1 to 5.9mm by 0.1mm	5611250	
118	Holds 118 drills from 1.0mm to 13.0mm	5611825	
12765	Holds 1.0, 1.2, 1.5, 2.0, 2.5, 3.0, 3.5, 4.0, 4.5, 5.0, 5.5, 6.0, 6.5	5612765	

**TAPER SHANK AND TAPER LENGTH DRILL INDEXES**



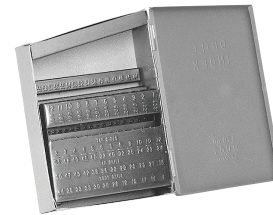
No.	Model Description	Order No.	Price
1016	33/64" to 3/4" x 64ths taper shank	5610900	
2016	49/64" to 1" x64ths taper shank	5610950	
326	A to Z taper length	5611525	
329	1/16" to 1/2" x 64ths taper length	5611600	
360	No.1 to 60 taper length	5611650	

**COMBINATION INDEXES**



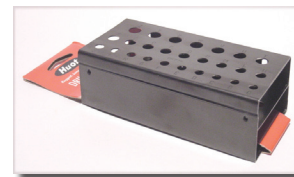
Model No.	Description	Order No.	Price
115	Holds 115 drills, same as #60, #26, #29, in one case	5611700	
135	Holds 135 drills, same as #20 #60, #26, #29, in one case	5611750	
134	Holds 134 drills, same as #20, #60, #29, #4025 in one case	5611800	
118	Holds 118 drills, from 1.0mm to 13mm	5611825	

**STUB SCREW MACHINE DRILL INDEXES**



Model No.	Description	Order No.	Price
2013	1/16" to 1/4" x 64ths	5611300	
2021	1/16" to 3/8" x 64ths	5611350	
2025	1 to 13mm by 0.5mm	5611375	
2026	A to Z	5611400	
2029	1/16" to 1/2" x 64ths	5611450	
2060	No. 1 to 60	5611500	
11550	Holds 115 drills: 1/16 to 1/2 x 64th, No. 1-60, A-Z	5611550	

**DRILL STANDS AND BURR STAND**



Model No.	Description	Order No.	Price
826	A to Z inc.	5611850	
829	1/16" to 1/2" x 64ths	5611900	
833	For jobbers & stub or screw machine length from 1/2" to 1" by 64ths	5611975	
833SD	For Silver Deming drills from 1/2" to 1" by 64ths	5611985	
824	Holds 24 1/4" shank burrs	5611875	

SPECIALTY FLUIDS



## INDEXES, STANDS & GAGES

SERIES 569:

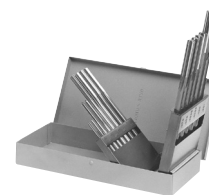


### TAP/ DRILL INDEXES



Model No.	Description	Order No.	Price
99	Holds 9 drills and 9 taps - NC 6-32, #36 to 1/2"-13, 27/64"	5612600	
18	Holds 9 drills and 9 taps - NF 6-40, #33 to 1/2"-20, 29/64"	5612650	
4099	Holds 9 drills and 9 taps- METRIC 2.5mm x 0.45 tap, 2.05 drill to 12.0mm x 1.75 tap 10.20mm drill	5612675	
36	Holds 18 drills & 18 taps both models 18 & 99 in one case	5612700	

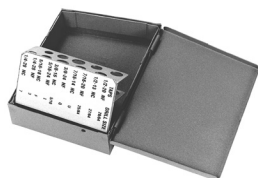
### REAMER INDEXES



Model No.	Description	Order No.	Price
126	A to Z inc.	5612000	
129	1/16" to 1/2" x64ths	5612050	
160	No. 1 to 60 inc.	5612200	
14	14 Over and Under reamers .124-.126 to .499-.501 by 16ths	5612100	
12125	14 Dowel pin reamers .123 to .4995	5612125	
125	Metric 1.00mm to 13.00mm by 0.5mm	5612130	

STORAGE PRODUCTS

### TAP INDEXES



Model No.	Description	Order No.	Price
19	10 taps 0-80 to 12-28 & 9 taps 1-64 to 12-24, 19 total	5612550	
10	5 taps 1/4-20 to 1/2-13 & 5 taps 1/4-28 to 1/2-20, 10 total	5612575	
12590	10 taps 4-40, 6-32, 8-32, 10-24, 10-32, 1/4-20, 5/16-18, 3/8-16, 1/2-13, 5/8-11	5612590	

### DRILL GAGES



Model No.	Description	Order No.	Price
9092	1/16" to 1/2" x 64ths	5612250	
12260	1 to 60 wire gauge	5612260	
12280	1/2" to 1" x 64ths	5612280	

### SCREW EXTRACTOR INDEX



Model No.	Description	Order No.	Price
55	Holds #1 to #5 screw extractor with matching drill bits	5610200	



While we show only the popular **Huot** items we can supply their entire range of products; please inquire.

### NEEDLE FILE INDEX



Model No.	Description	Order No.	Price
10010	Holds 12 assorted needle files for quick selection	5610010	

### TAP & DRILL STANDS

SERIES 639:

Easy access to proper Body Drill, Tap Drill, and Tap.



English



Metric

Description	Order No.	Price
English (65 Holes for #2 to 1/2")	6000032	
Metric (45 Holes for 2-14mm)	6000033	



## DISPENSERS & TOOL BOX

SERIES 569:

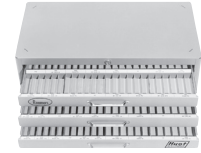


### DRILL DISPENSERS



Model No.	Description	Wt.	Order No.	Price
1	For 1/16" to 1/2" X 64ths drills	10 lbs	5613000	
2	For No. 1 to 60 drills	13 lbs	5613025	
3	For A to Z drills	11 lbs	5613050	
4	For metric 1mm to 13 mm by 0.5mm	10 lbs	5613075	
5	For metric 1mm to 6.9 by 0.1 mm	13 lbs	5613100	
84	For #1 to 80 drills 84 compartments	14 lbs	5613040	
13175	For 1/16" to 1/2" x 64ths drills; A to Z, 1 to 60 drills	43 lbs	5613175	
13180	Metric .35 to 2.5mm x .05, 2.6mm to 10mm x .1 common sizes to 13mm	43 lbs	5613180	

### REAMER DISPENSERS



Model No.	Description	Wt	Order No.	Price
196	Fractional reamers 1/8" to 1/2", Over/ Under Reamers from .1240 to .5010, Dowel pin reamers from .1230 to .4995	38 lbs	5613400	
13410	1/16 to 1/2 reamers 4 drawer cabinet	12 lbs	5613410	
13415	A to Z size reamers 3 drawer	11 lbs	5613415	
13420	1 to 60 reamers 5 drawer cabinet	13 lbs	5613420	
13430	Over/ Under and Dowel pin reamers	12 lbs	5613430	
13450	Fractional reamers 1/16" to 1/2", Over/ Under Reamers from .1240 to .5010, Dowel pin reamers from .1230 to .4995, Metric reamers 1.0mm to 13.0mm x .5	46 lbs	5613450	

### TAP DISPENSERS



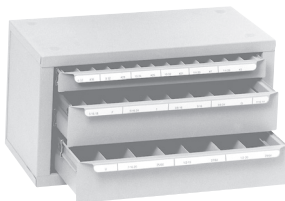
Model No.	Description	Wt.	Order No.	Price
13500	For taps 1/4-20 thru 1"-14	10 lbs	5613500	
13550	For taps 2-56 thru 12-28	13 lbs	5613550	
13575	For metric taps 3mm to 24mm	10 lbs	5613575	
13580	Holds 1/4-20 to 1"-14 taper, plug, bottoming & 2-56 to 12-28 taper, plug, bottoming & spiral	50 lbs	5613580	
13585	Holds popular NC and NF taps from 1/4 " to 1-1/2", machine screw sizes 2-56 thru 12-28 and metric 2.5mm to 30mm	50 lbs	5613585	

### END MILL DISPENSERS



Model No.	Description	Wt	Order No.	Price
13300	2 Flute single and double end mills 1/16 to 1"	37 lbs	5613300	
13325	4 Flute single and double end mills 1/16 to 1"	37 lbs	5613325	
13350	1/8" to 1" end mills	10 lbs	5613350	
13375	Metric end mills in a 3 drawer Master cabinet 2.0 to 25.0	38 lbs	5613375	

### TAP/ DRILL DISPENSER



Model No.	Description	Weight	Order No.	Price
1414	For taps and drills from 6-32 #36 to 1/2"-20 29/64"	10 lbs	5613590	

### TOOL BOX - HEAVY DUTY SERIES 451:



Spacious storage compartment and four smooth-gliding cantilever trays. Made of 0.8mm heavy gauge steel. Sturdy construction. Blue baked enamel durable finish. Complete with two padlock eyes on cover for attachment of lock; two heavy easy-grip round handles extending over full length of box.



Size (L x W x h)	Weight	Order No.	Price
16-3/4 x 8 x 8	11 lbs.	2525000*	

\*LIMITED QUANTITY

SERIES 451:



Made In U.S.A.

\*Please specify color when ordering.

### Model 520

#### 7 Drawer Machinist's Chest

- Drawers and top till wool felt-lined
- Vinyl cushioned, steel core top handle
- Six drawer dividers
- 20-1/8 W x 8-9/16 D x 13 5/8"H
- Brown wrinkle finish
- 35 lbs.



Order No. 8410520

Price

### Model 52611

#### 11 Drawer Machinist's Chest

- Drop front panel adds security
- Heavy Duty plated side handles
- Eight drawer dividers and wool felt-lined drawers and top till
- 26-11/16" W x 8-9/16" D x 13 5/8"H
- Brown wrinkle finish
- 56 lbs.



Order No. 4152611

Price

### Model 266

#### 6 Drawer Mechanist's Chest

- Full length staked chest hinges are securely welded.
- Partitioned top till holds lift-out tray
- Drawers lock when the lid is closed by internal drawer locking system.
- 26-1/8" W x 12-1/16" D x 14-3/4" H
- Brown wrinkle or smooth red finish\*
- 58 lbs.



Order No. 8410266

Price

### Model 10491

#### 11 Drawer Pro-Line Maintenance Cart With Side Compartment

- Heavy, welded-steel construction
- Huge 39" x 18" MDF work surface
- Side compartment has adjustable MDF shelf and locking door
- Ball-bearing drawer slides
- Includes tubular side handle, aluminum drawer pulls, two keyed alike tubular locks and 5 x 2" roller bearing casters
- 39"-3/8" W x 18" D x 35" H
- High-gloss black powder finish
- 205 lbs.



Order No. 4110491

Price

### Model 277 (Bottom)



#### 7 Drawer Roller Chest

- Tamper proof internal drawer locking system...Fully lockable
- Comes with 5 x 1-1/4" casters
- 27" W x 18" D x 35" H
- Brown wrinkle or smooth red finish\*
- 138 lbs.

Order No. 8410277

Price

### Model 1018

#### Cantilever Tool Box

- Moveable/removable partitions and divider sets in two trays
- Steel core, vinyl
- 18-1/8" L x 10-1/16 W x 12-5/8"H
- Brown wrinkle finish with tan enamel trays
- 19.5 lbs.



Order No. 8411018

Price

### Model 297 or Model 297X

#### 7 Drawer Roller Cabinet

- Tamper proof internal drawer locking system. Fully lockable.
- Comes with 5 x 2" casters
- 29" W x 20" D x 35" H
- Brown wrinkle or smooth red finish\*



Model No.	Weight	Order No.	Price
297	158 lbs.	8410297	<input type="text"/>
297X	165 lbs.	8412971	<input type="text"/>

- Model 297 comes with friction slides
- Model 297X comes with ball-bearing slides on all drawers

### Model K20

#### Professional Flat Top Tool Box/20"

- Heavy duty, heavily plated hardware plus rolled and flattened body and lid edges for added strength
- Vinyl cushioned steel core top handle
- Lift-out tray
- 20-1/8" L x 8-5/8 W x 9-3/4 "H
- Brown wrinkle finish with tan enamel tray
- 14 lbs.



Order No. 8410020

Price

While we show the most popular **Kennedy** items, we can supply their entire range of products; please inquire.